

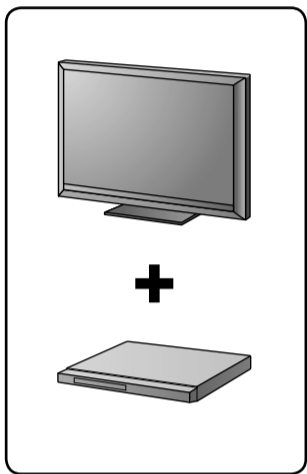


# CD/DVD Player

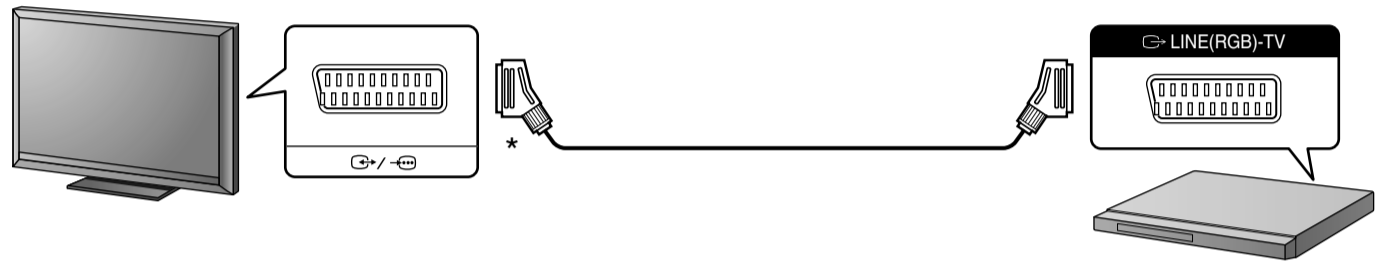
Startup Guide / Guide de démarrage / Anleitung für die Inbetriebnahme / Guida all'avvio / Guía de inicio rápido / Snelstartgids / Startvejledning / Uppstartguide / Käynnistysopas / Guia de Início Rápido / Οδηγός εκκίνησης / Başlangıç Kılavuzu / Příručka spouštění / Használatba vételi útmutató / Ghid introductiv / Instrukcja uruchamiania / Руководство по началу работы / Посібник із налаштування / Іске қосу нұсқаулығы

1

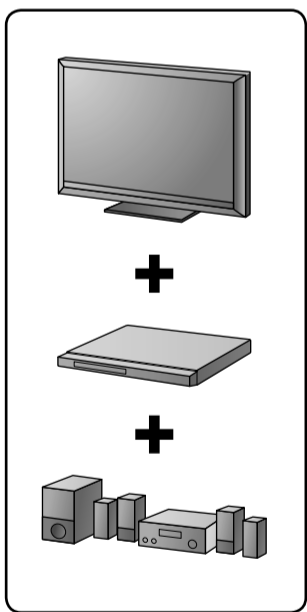
A



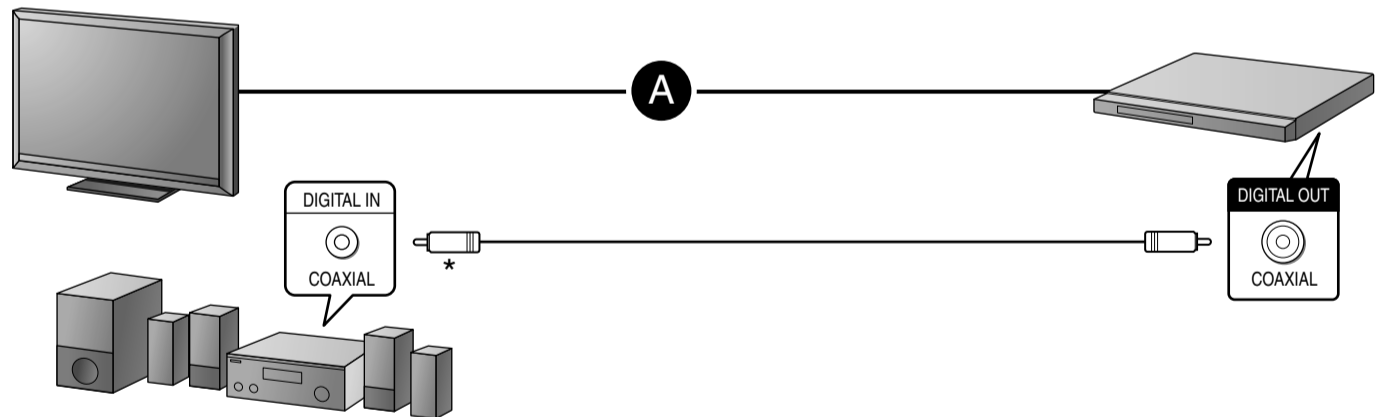
■ SCART



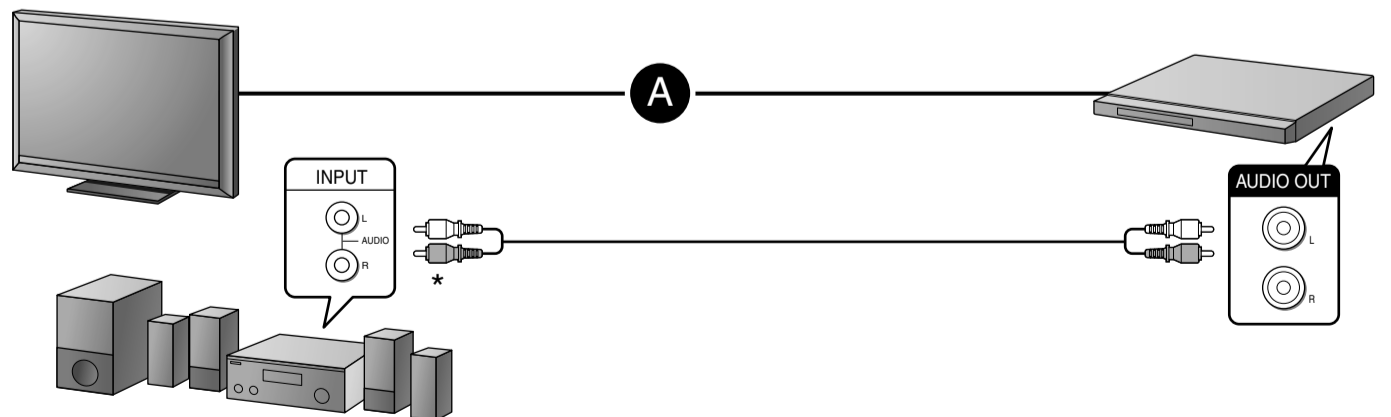
B



■ COAXIAL



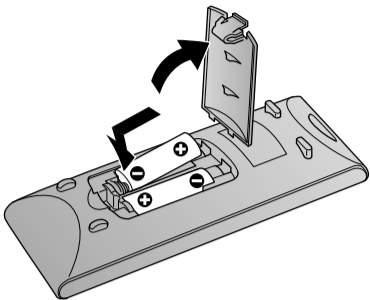
■ AUDIO



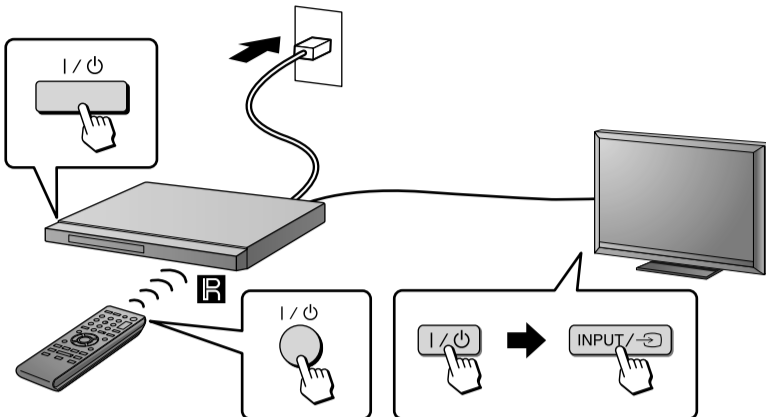
\* Not supplied / Non fourni / Nicht mitgeliefert / Non in dotazione / No suministrado / Niet bijgeleverd / Medfølger ikke / Medfølger ej / Ei sisälly vakiovarusteisiin / Não fornecido / Δεν παρέχεται / Birlikte verilmez / Není součástí dodávky / Külön megvásárolható / Nu este inclus / Nie należy do wyposażenia / Не прилагается / Не поставляется / Берілмерген

# 2

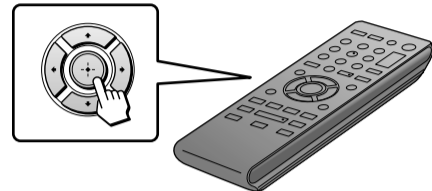
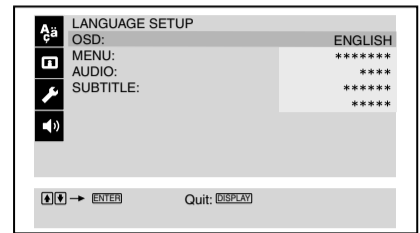
1



2

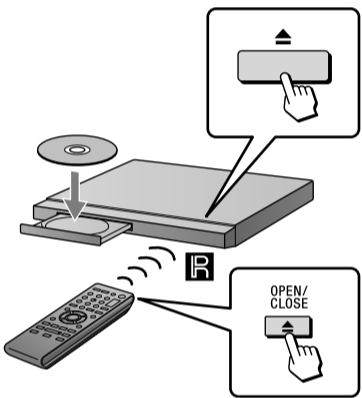


3

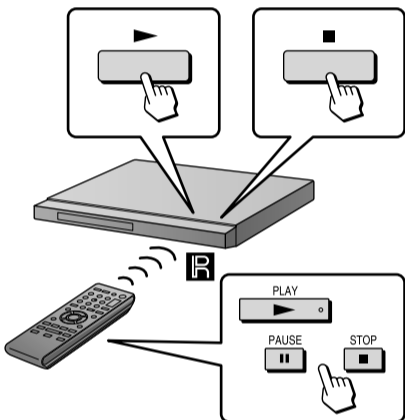


# 3

1



2



**TIME/TEXT**: Shows a progress bar and time (0:00:20) over a landscape image.

**PICTURE NAVI**: A 3x3 grid of picture icons for selection.

**AUDIO**: Shows audio settings: 1: ENGLISH DOLBY DIGITAL 3/2.1 over a landscape image.

**SUBTITLE**: Shows subtitle settings: 1: ENGLISH over a landscape image with the text "A mountain towers over a lake."

**MENU**: Shows a CHAPTER menu with six options: Chapter 1 through Chapter 6.

**DISPLAY**: Shows a DVD VIDEO menu with options for TITLE, chapter numbers (1 (1), 1 (12)), and time (T 0:00:00).

At the bottom, two horizontal progress bars are shown with a person icon, representing playback progress and time.